

# THE ELAN

1,626 SQ.FT. – Elevation A | 1,642 SQ.FT. – Elevation B | 1,907 SQ.FT. – Elevation C

The Flair Collection



ELEVATION A



ELEVATION B



Floor plans, elevations, dimensions and details are based upon pre-construction plans and may be revised at Vendor's sole discretion. All dimensions are approximate and generally comprise the greater length by the greater width of the area. Note that actual usable floor area may vary from that stated, which includes open areas and finished below grade areas where applicable. Homes may be sited in reverse and Purchaser agrees to same. Steps, porch, deck and railings may vary at any exterior entrance including garage entrance. Boxing is not shown. Illustrations are Artist's concept. The Agreement of Purchase and Sale prevails in the event of conflict or ambiguity. (NM-SD2) E. & O.E. February 2022

# THE ELAN

1,626 SQ.FT. – Elevation A | 1,642 SQ.FT. – Elevation B | 1,907 SQ.FT. – Elevation C

The Flair Collection



ELEVATION C

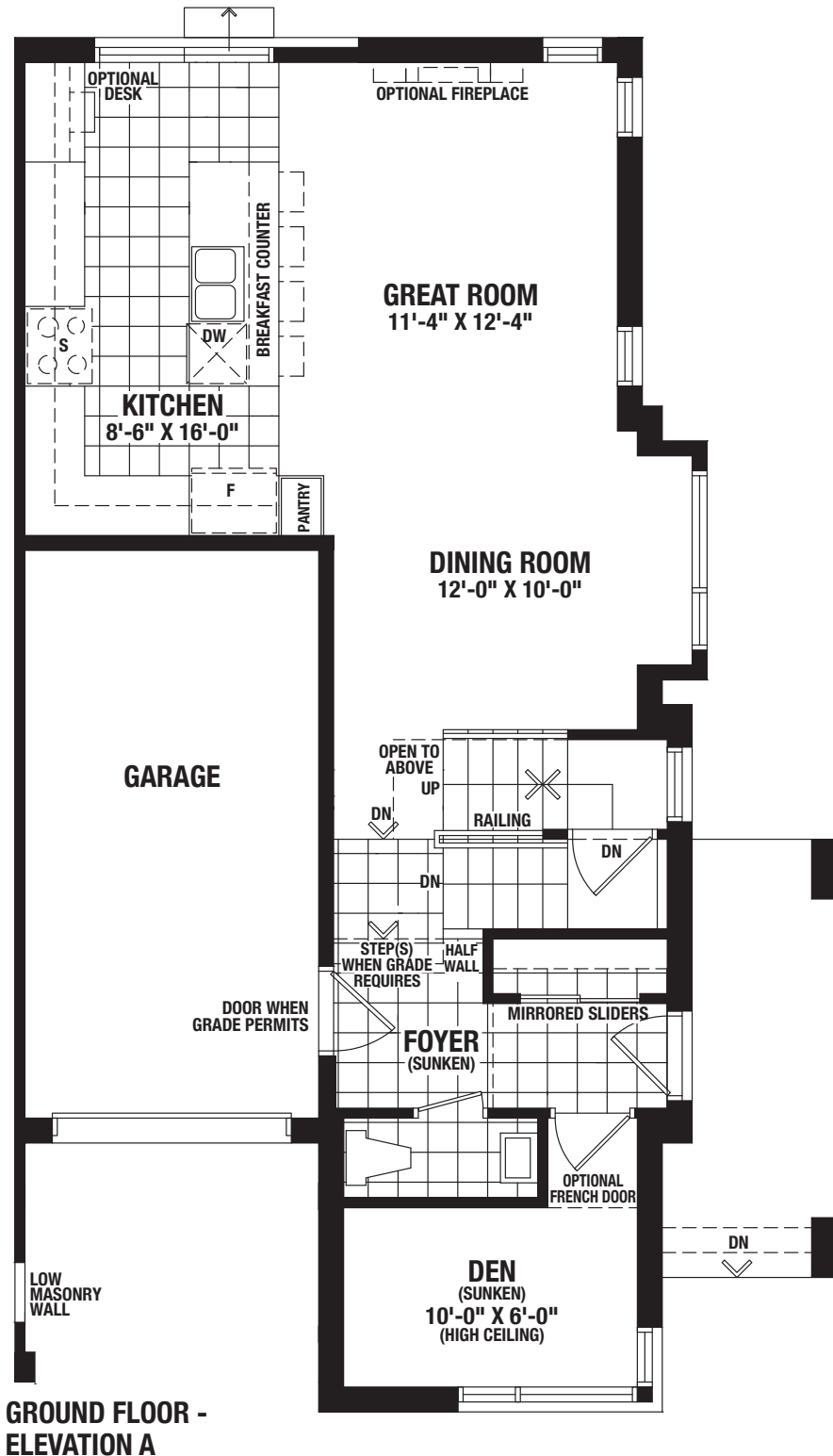


Floor plans, elevations, dimensions and details are based upon pre-construction plans and may be revised at Vendor's sole discretion. All dimensions are approximate and generally comprise the greater length by the greater width of the area. Note that actual usable floor area may vary from that stated, which includes open areas and finished below grade areas where applicable. Homes may be sited in reverse and Purchaser agrees to same. Steps, porch, deck and railings may vary at any exterior entrance including garage entrance. Boxing is not shown. Illustrations are Artist's concept. The Agreement of Purchase and Sale prevails in the event of conflict or ambiguity. (NM-SD1) E. & O.E. February 2022

# THE ELAN

1,626 SQ.FT. – Elevation A | 1,642 SQ.FT. – Elevation B | 1,907 SQ.FT. – Elevation C

The Flair Collection

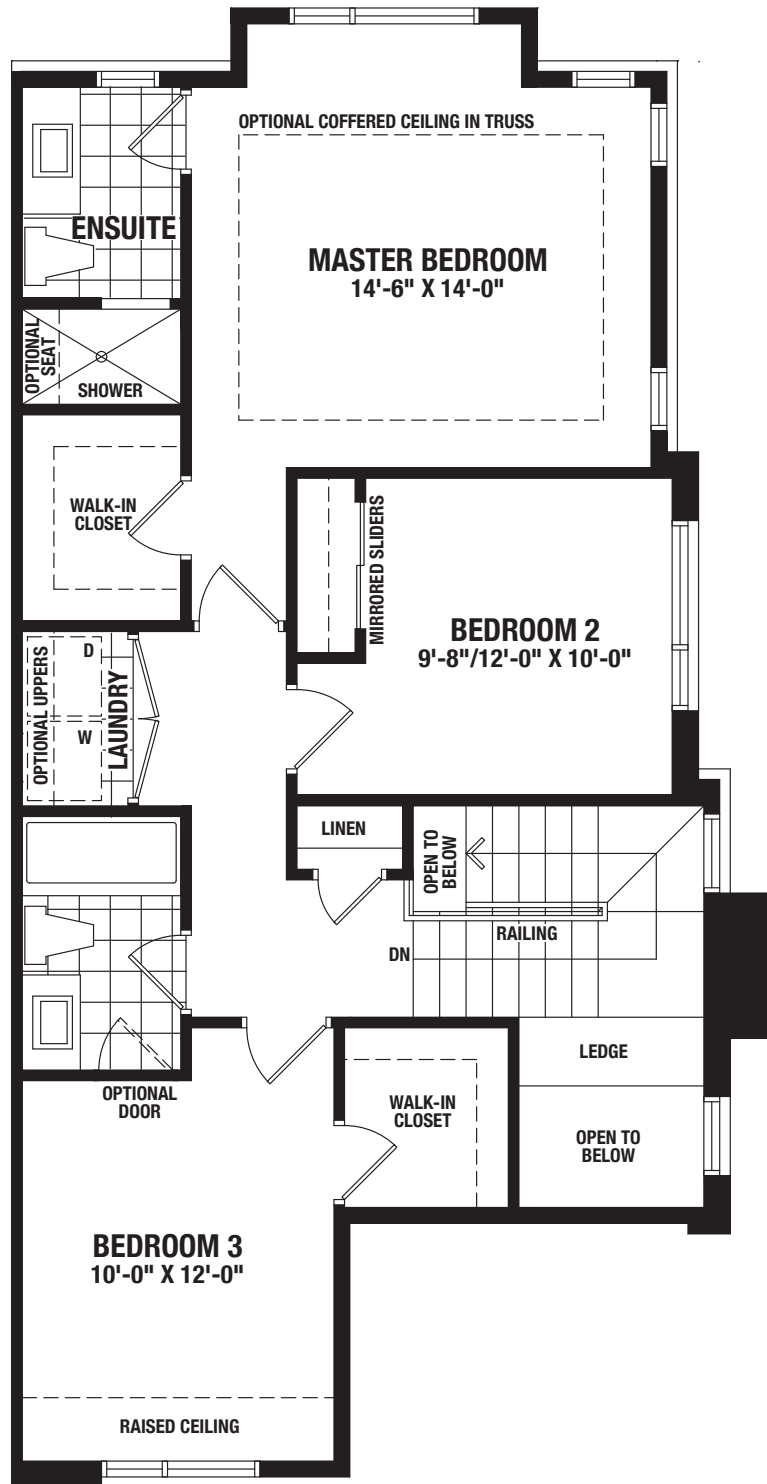


Floor plans, elevations, dimensions and details are based upon pre-construction plans and may be revised at Vendor's sole discretion. All dimensions are approximate and generally comprise the greater length by the greater width of the area. Note that actual usable floor area may vary from that stated, which includes open areas and finished below grade areas where applicable. Homes may be sited in reverse and Purchaser agrees to same. Steps, porch, deck and railings may vary at any exterior entrance including garage entrance. Boxing is not shown. Illustrations are Artist's concept. The Agreement of Purchase and Sale prevails in the event of conflict or ambiguity. (NM-SD2) E. & O.E. February 2022

# THE ELAN

1,626 SQ.FT. – Elevation A | 1,642 SQ.FT. – Elevation B | 1,907 SQ.FT. – Elevation C

The Flair Collection



**SECOND FLOOR -  
ELEVATION A**

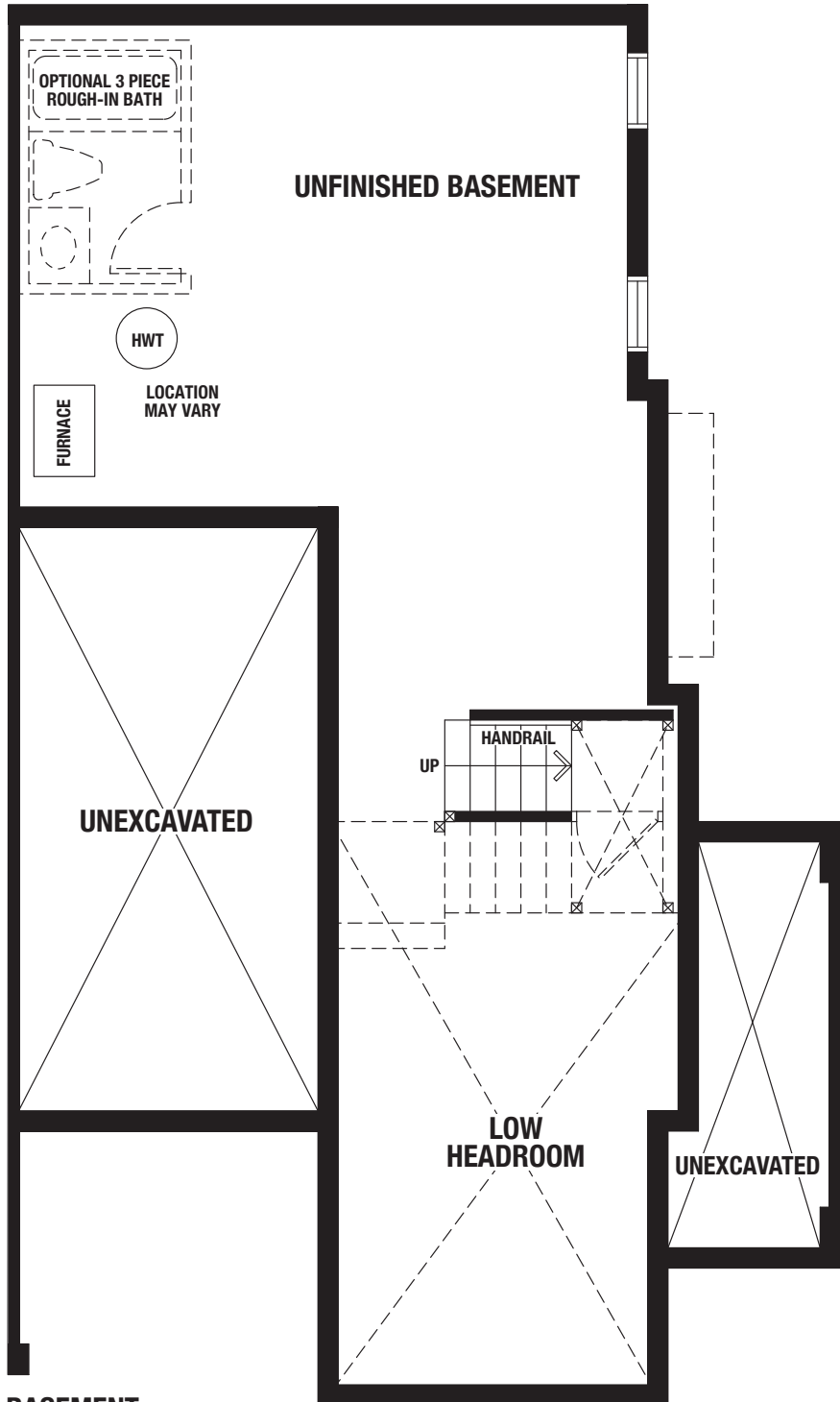


Floor plans, elevations, dimensions and details are based upon pre-construction plans and may be revised at Vendor's sole discretion. All dimensions are approximate and generally comprise the greater length by the greater width of the area. Note that actual usable floor area may vary from that stated, which includes open areas and finished below grade areas where applicable. Homes may be sited in reverse and Purchaser agrees to same. Steps, porch, deck and railings may vary at any exterior entrance including garage entrance. Boxing is not shown. Illustrations are Artist's concept. The Agreement of Purchase and Sale prevails in the event of conflict or ambiguity. (NM-SD2) E. & O.E. February 2022

# THE ELAN

1,626 SQ.FT. – Elevation A | 1,642 SQ.FT. – Elevation B | 1,907 SQ.FT. – Elevation C

The Flair Collection



**BASEMENT -  
ELEVATION A**

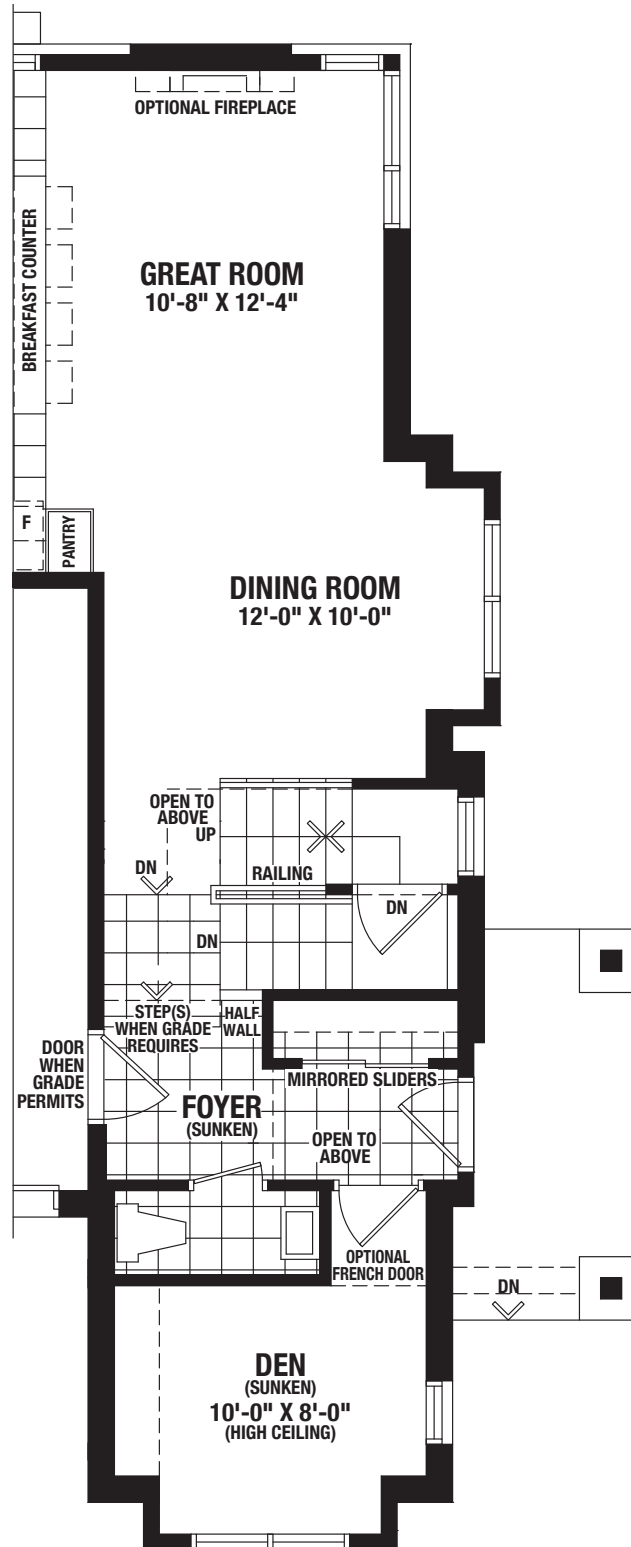


Floor plans, elevations, dimensions and details are based upon pre-construction plans and may be revised at Vendor's sole discretion. All dimensions are approximate and generally comprise the greater length by the greater width of the area. Note that actual usable floor area may vary from that stated, which includes open areas and finished below grade areas where applicable. Homes may be sited in reverse and Purchaser agrees to same. Steps, porch, deck and railings may vary at any exterior entrance including garage entrance. Boxing is not shown. Illustrations are Artist's concept. The Agreement of Purchase and Sale prevails in the event of conflict or ambiguity. (NM-SD2) E. & O.E. February 2022

# THE ELAN

1,626 SQ.FT. – Elevation A | 1,642 SQ.FT. – Elevation B | 1,907 SQ.FT. – Elevation C

The Flair Collection



**PARTIAL GROUND FLOOR -  
ELEVATION B**

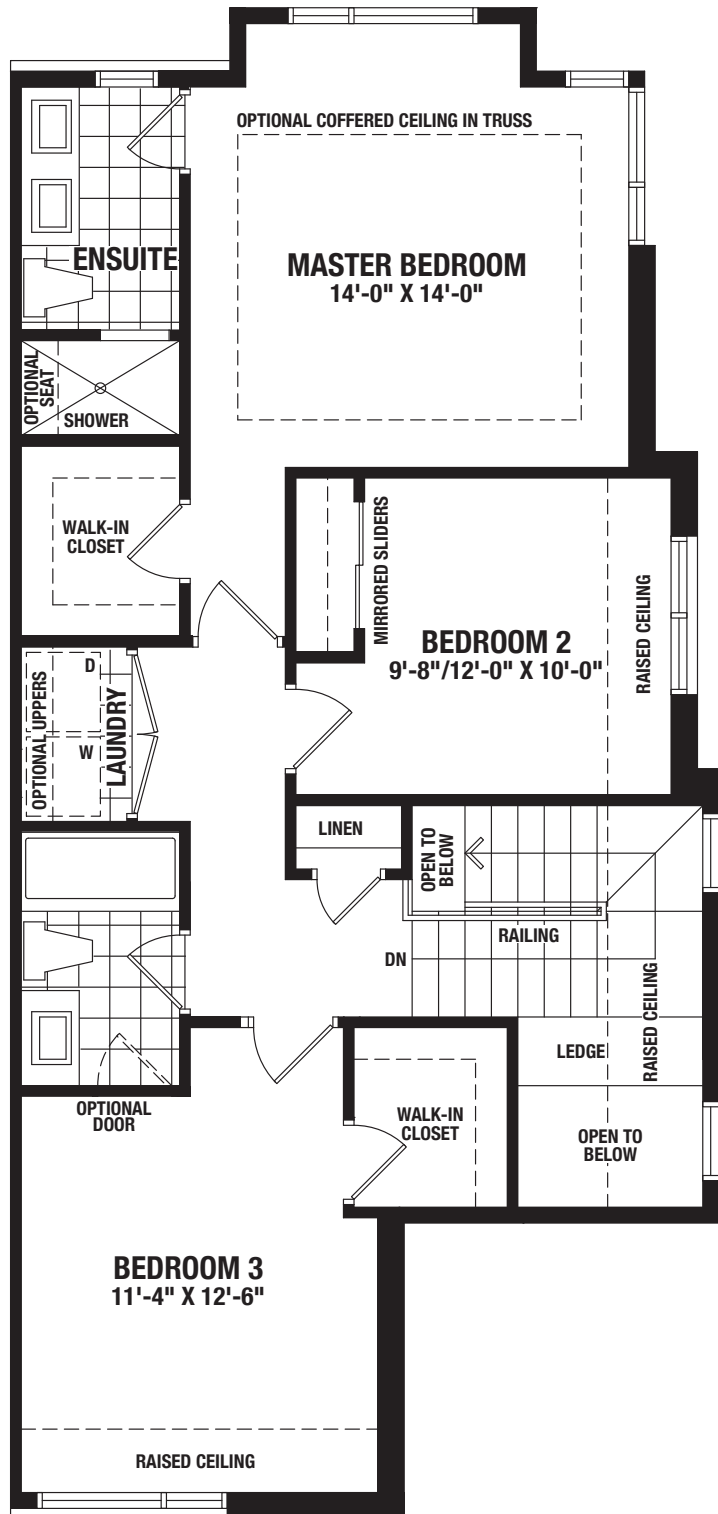


Floor plans, elevations, dimensions and details are based upon pre-construction plans and may be revised at Vendor's sole discretion. All dimensions are approximate and generally comprise the greater length by the greater width of the area. Note that actual usable floor area may vary from that stated, which includes open areas and finished below grade areas where applicable. Homes may be sited in reverse and Purchaser agrees to same. Steps, porch, deck and railings may vary at any exterior entrance including garage entrance. Boxing is not shown. Illustrations are Artist's concept. The Agreement of Purchase and Sale prevails in the event of conflict or ambiguity. (NM-SD2) E. & O.E. February 2022

# THE ELAN

1,626 SQ.FT. – Elevation A | 1,642 SQ.FT. – Elevation B | 1,907 SQ.FT. – Elevation C

The Flair Collection



**SECOND FLOOR -  
ELEVATION B**

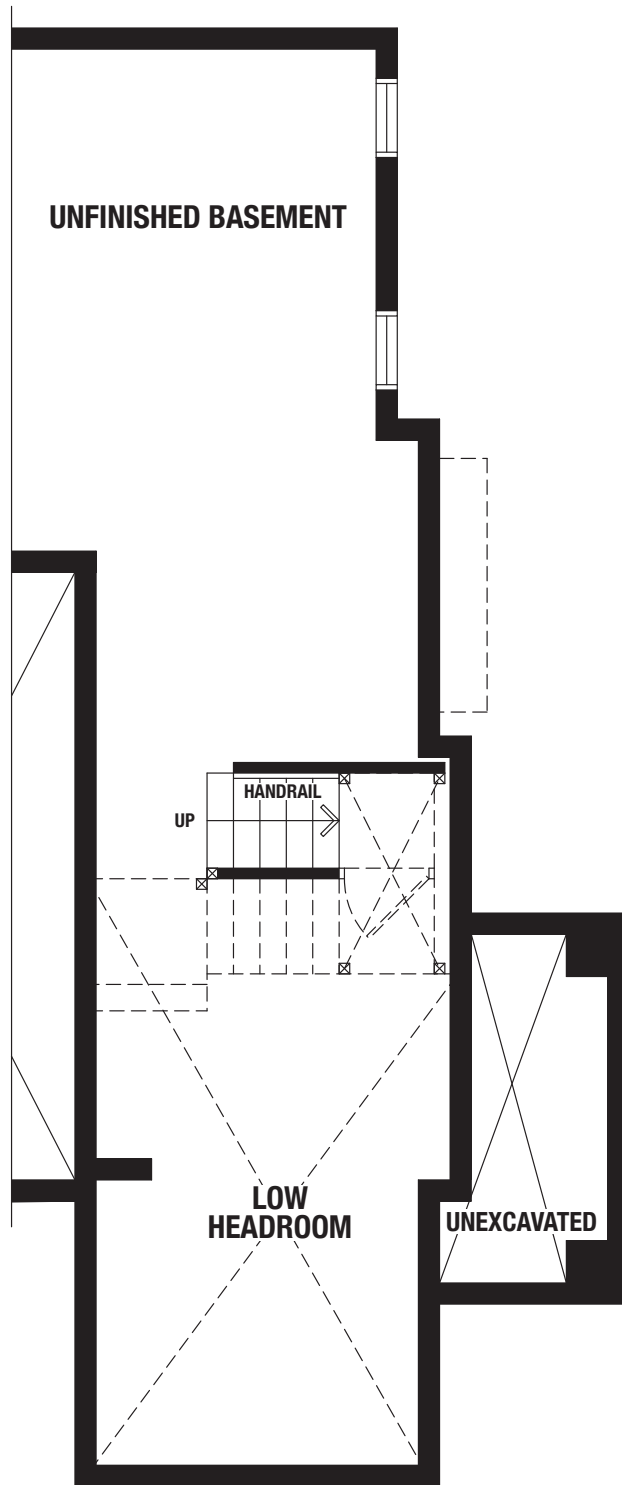


Floor plans, elevations, dimensions and details are based upon pre-construction plans and may be revised at Vendor's sole discretion. All dimensions are approximate and generally comprise the greater length by the greater width of the area. Note that actual usable floor area may vary from that stated, which includes open areas and finished below grade areas where applicable. Homes may be sited in reverse and Purchaser agrees to same. Steps, porch, deck and railings may vary at any exterior entrance including garage entrance. Boxing is not shown. Illustrations are Artist's concept. The Agreement of Purchase and Sale prevails in the event of conflict or ambiguity. (NM-SD2) E. & O.E. February 2022

# THE ELAN

1,626 SQ.FT. – Elevation A | 1,642 SQ.FT. – Elevation B | 1,907 SQ.FT. – Elevation C

The Flair Collection



**PARTIAL BASEMENT -  
ELEVATION B**



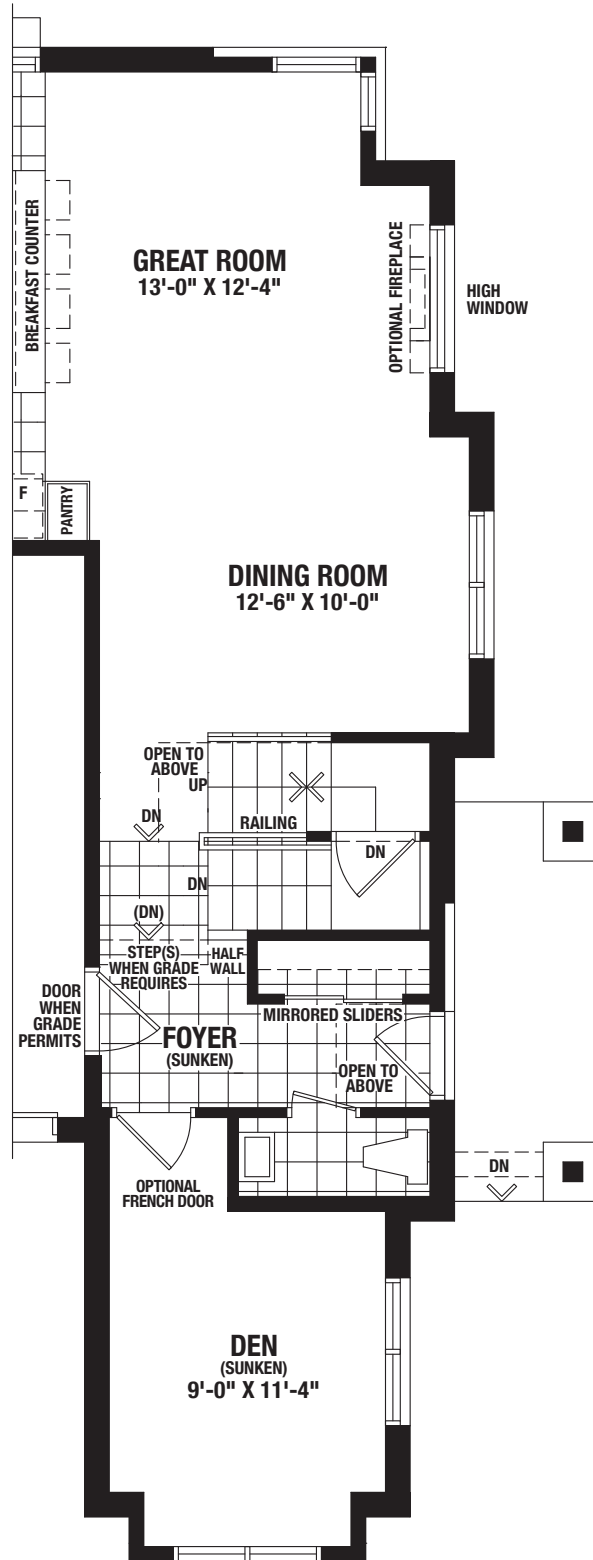
Floor plans, elevations, dimensions and details are based upon pre-construction plans and may be revised at Vendor's sole discretion. All dimensions are approximate and generally comprise the greater length by the greater width of the area. Note that actual usable floor area may vary from that stated, which includes open areas and finished below grade areas where applicable. Homes may be sited in reverse and Purchaser agrees to same. Steps, porch, deck and railings may vary at any exterior entrance including garage entrance. Boxing is not shown. Illustrations are Artist's concept. The Agreement of Purchase and Sale prevails in the event of conflict or ambiguity. (NM-SD2) E. & O.E. February 2022



# THE ELAN

1,626 SQ.FT. – Elevation A | 1,642 SQ.FT. – Elevation B | 1,907 SQ.FT. – Elevation C

The Flair Collection



**PARTIAL GROUND FLOOR  
ELEVATION C**

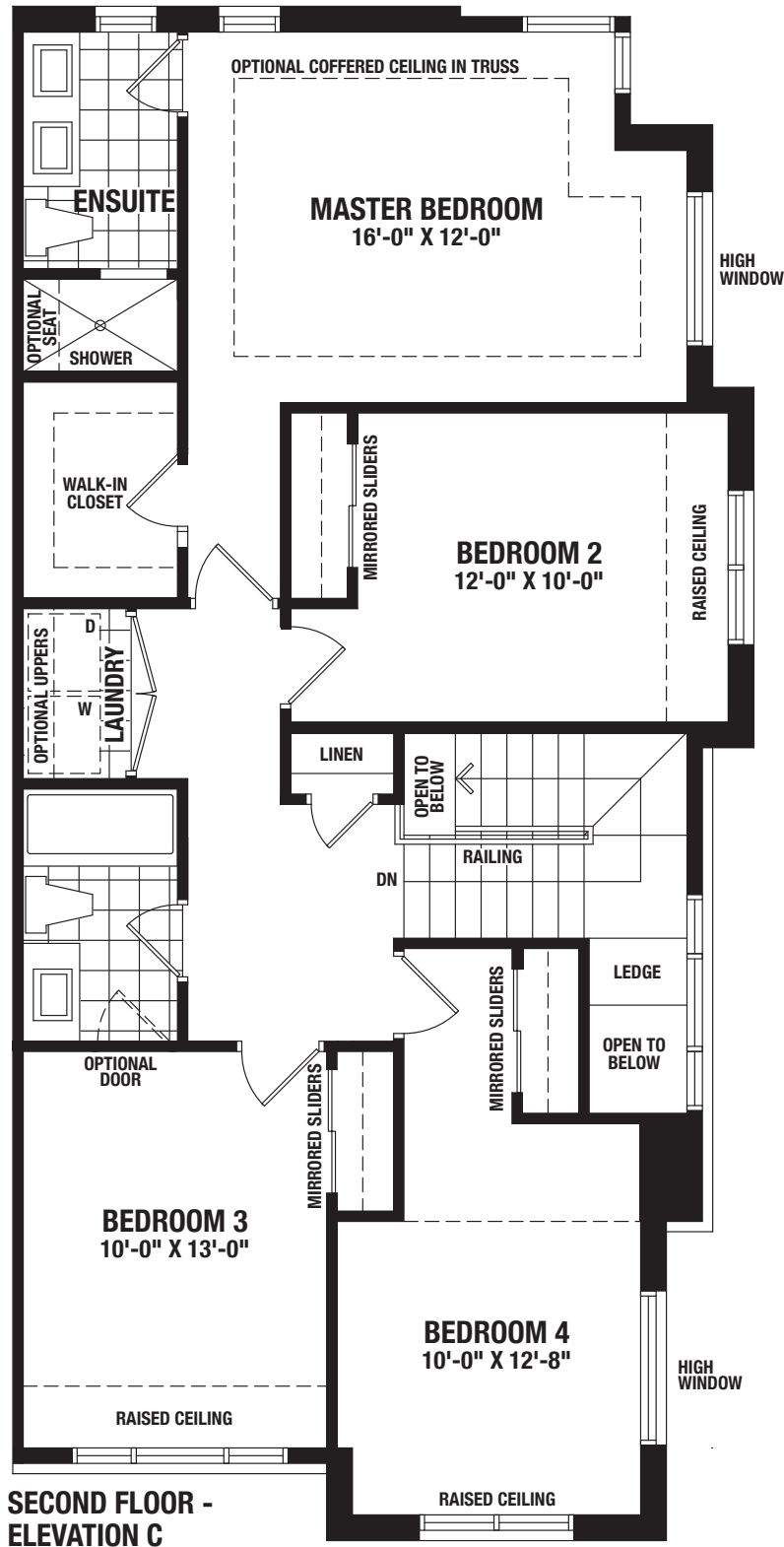


Floor plans, elevations, dimensions and details are based upon pre-construction plans and may be revised at Vendor's sole discretion. All dimensions are approximate and generally comprise the greater length by the greater width of the area. Note that actual usable floor area may vary from that stated, which includes open areas and finished below grade areas where applicable. Homes may be sited in reverse and Purchaser agrees to same. Steps, porch, deck and railings may vary at any exterior entrance including garage entrance. Boxing is not shown. Illustrations are Artist's concept. The Agreement of Purchase and Sale prevails in the event of conflict or ambiguity. (NM-SD2) E. & O.E. February 2022

# THE ELAN

1,626 SQ.FT. – Elevation A | 1,642 SQ.FT. – Elevation B | 1,907 SQ.FT. – Elevation C

The Flair Collection

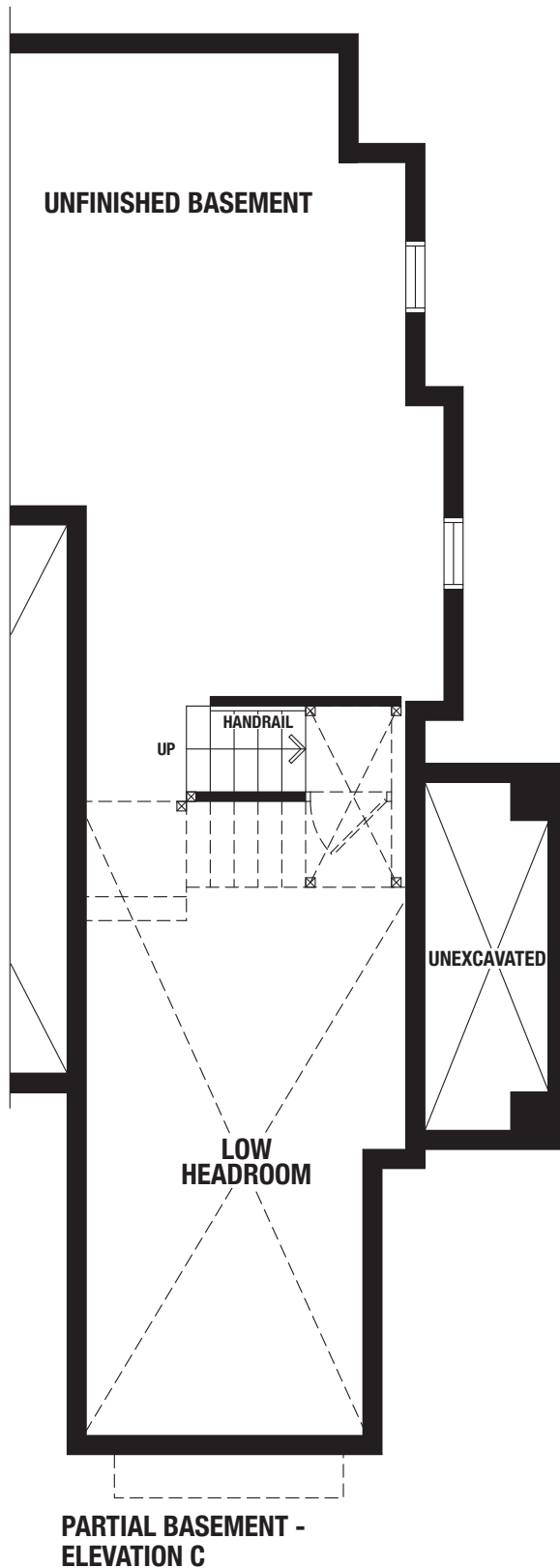


Floor plans, elevations, dimensions and details are based upon pre-construction plans and may be revised at Vendor's sole discretion. All dimensions are approximate and generally comprise the greater length by the greater width of the area. Note that actual usable floor area may vary from that stated, which includes open areas and finished below grade areas where applicable. Homes may be sited in reverse and Purchaser agrees to same. Steps, porch, deck and railings may vary at any exterior entrance including garage entrance. Boxing is not shown. Illustrations are Artist's concept. The Agreement of Purchase and Sale prevails in the event of conflict or ambiguity. (NM-SD2) E. & O.E. February 2022

# THE ELAN

1,626 SQ.FT. – Elevation A | 1,642 SQ.FT. – Elevation B | 1,907 SQ.FT. – Elevation C

The Flair Collection



**PARTIAL BASEMENT -  
ELEVATION C**



Floor plans, elevations, dimensions and details are based upon pre-construction plans and may be revised at Vendor's sole discretion. All dimensions are approximate and generally comprise the greater length by the greater width of the area. Note that actual usable floor area may vary from that stated, which includes open areas and finished below grade areas where applicable. Homes may be sited in reverse and Purchaser agrees to same. Steps, porch, deck and railings may vary at any exterior entrance including garage entrance. Boxing is not shown. Illustrations are Artist's concept. The Agreement of Purchase and Sale prevails in the event of conflict or ambiguity. (NM-SD2) E. & O.E. February 2022